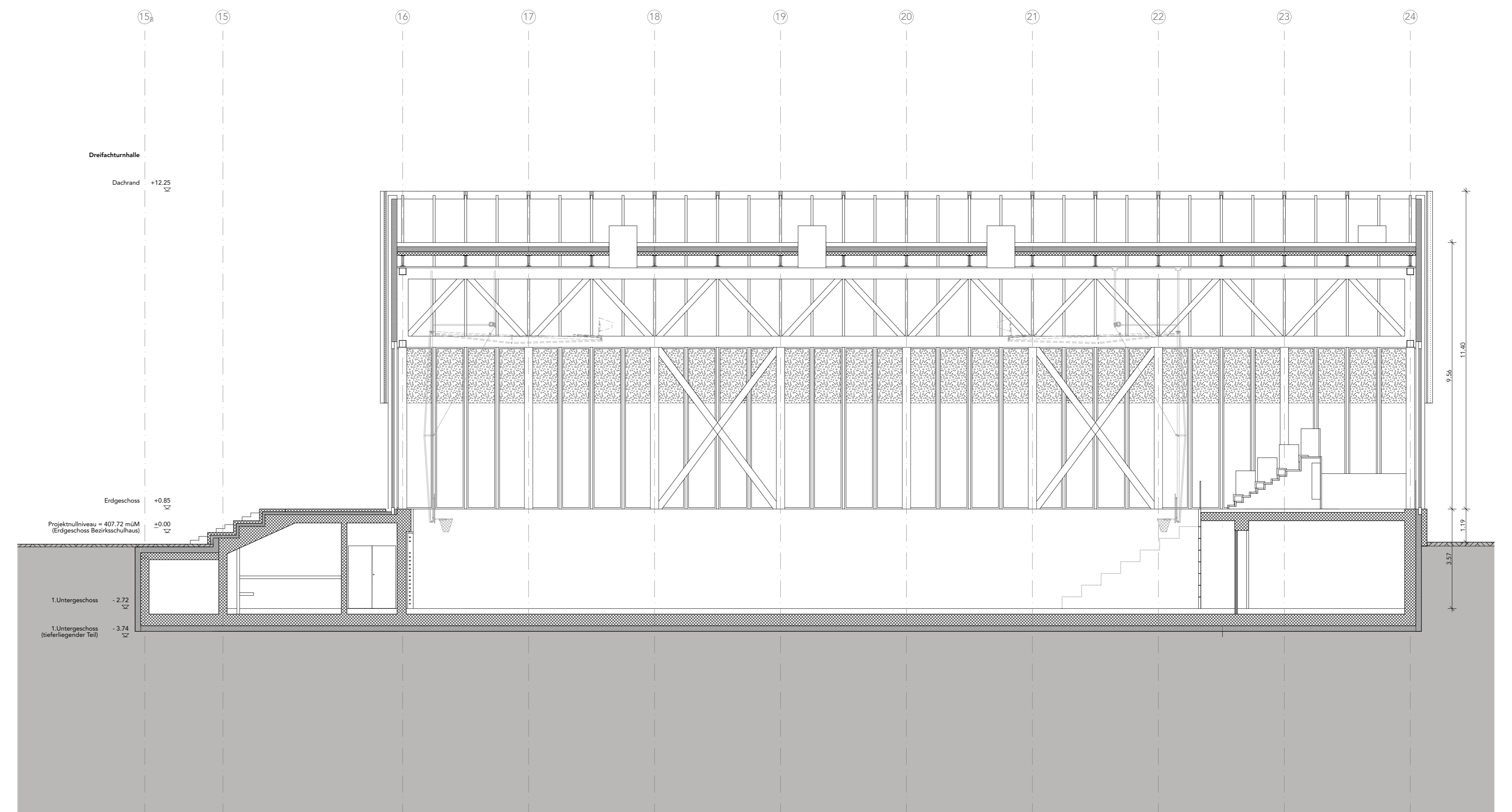
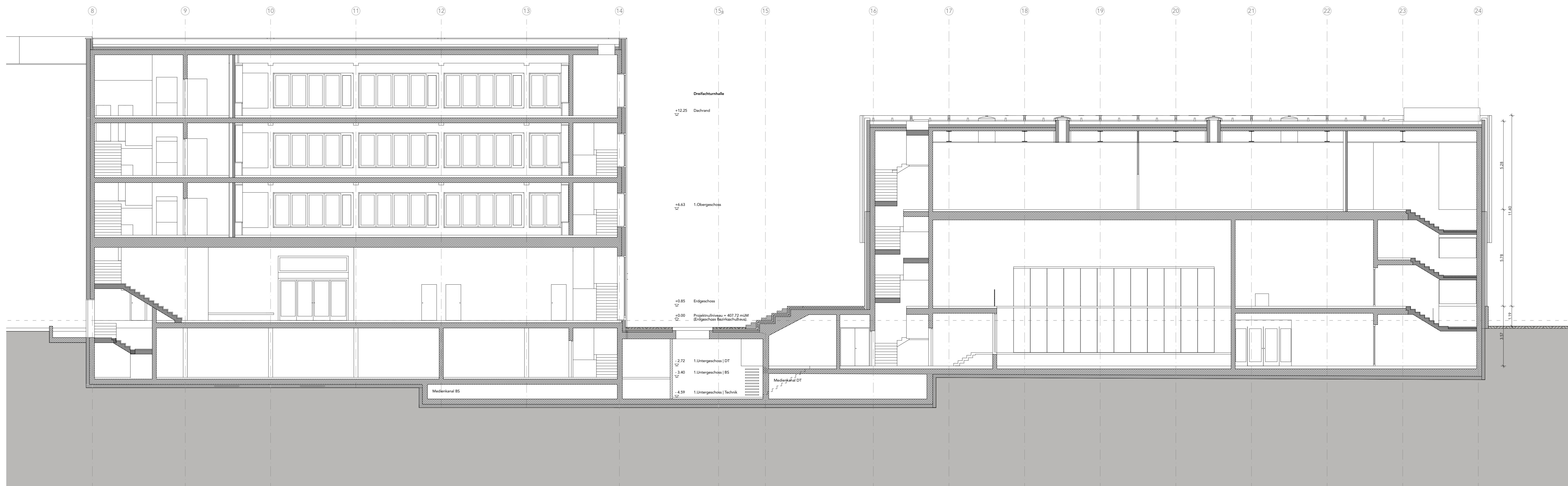


Schnitt 3



Schnitt 4

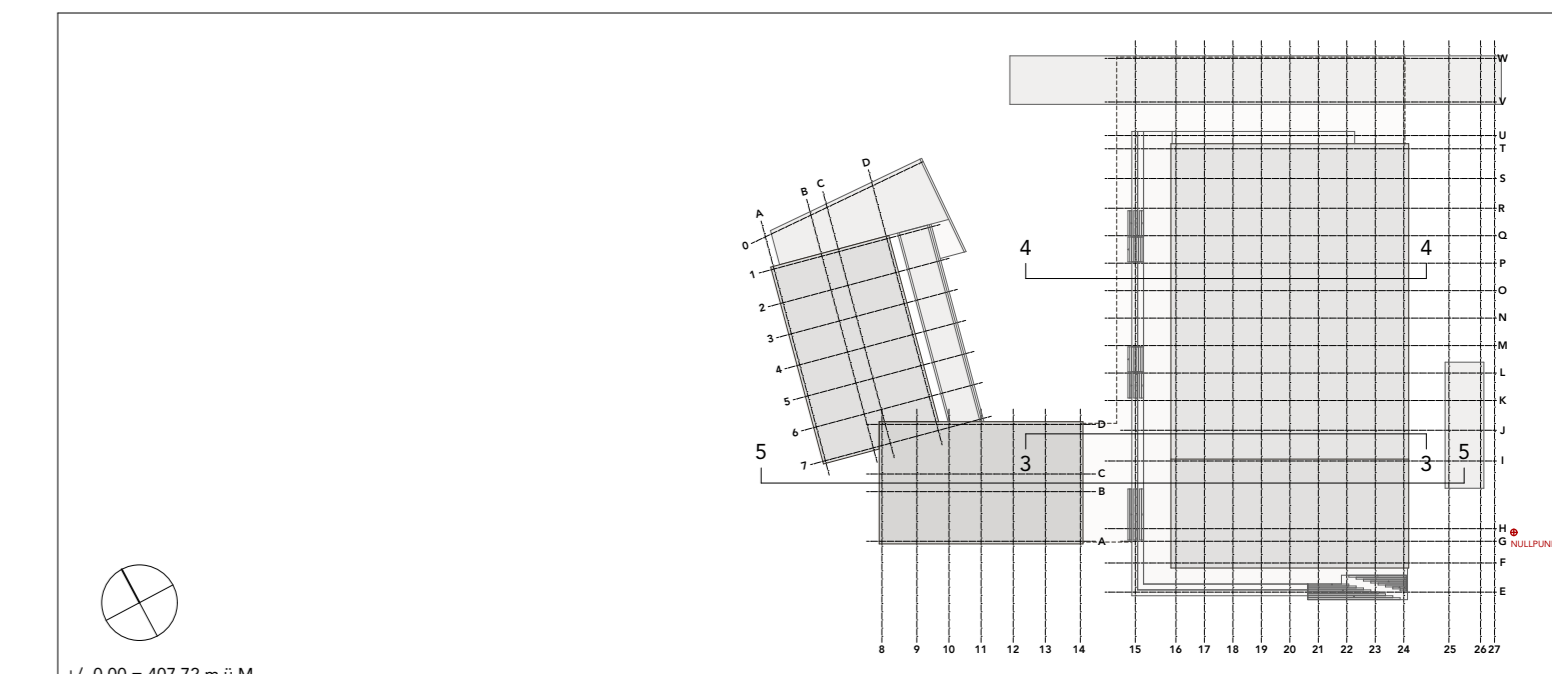


Schnitt 5

ARGE BSL Akernet | Anals Architektur | Studio JES  
 c/o Akernet Baumanagement AG, Sandrainstrasse 3, 3000 Bern 13  
 Zentrumstrasse 35  
 8854 Zurich  
 T +41 44 380 07 86  
 info@anals-architektur.ch  
 info@studio-jes.ch

Planrevisionen

| Index | Datum | Autor | Revision |
|-------|-------|-------|----------|
| A     |       |       |          |
| B     |       |       |          |
| C     |       |       |          |
| D     |       |       |          |
| E     |       |       |          |
| F     |       |       |          |
| G     |       |       |          |
| H     |       |       |          |
| I     |       |       |          |
| J     |       |       |          |
| K     |       |       |          |
| L     |       |       |          |
| M     |       |       |          |
| N     |       |       |          |



Planbezeichnung

| Projekt | Planer | Phase | Gebäude | Geschoss | Plannummer | Titel |
|---------|--------|-------|---------|----------|------------|-------|
|         |        |       |         |          |            |       |

BSL-AR-32-DT-AG-SC141-Schnitte 3 / 4 / 5

ARGE BSL Akernet | Anals Architektur | Studio JES c/o Akernet Baumanagement AG, Sandrainstrasse 3, 3000 Bern 13  
 Projekt: BSL | Neubau Bezirkschulhaus | Dreifachturnhalle  
 Bauphase: UA | Phase 1  
 Schnitt 3 / 4 / 5  
 BSL-AR-32-DT-AG-SC141-Schnitte 3 / 4 / 5